



UNIFLEX®
Fluid Applied Roofing Systems

888-321-3539 or visit **uniflexroof.com**

101 PROSPECT AVE NW, CLEVELAND, OHIO



UNIFLEX®
Fluid Applied Roofing Systems

PRODUCT PORTFOLIO







Table of Contents

Benefits of UNIFLEX® Fluid Applied Roofing Systems	4-5
Reflective White Roof Coatings	6
Pigmented Roof Coatings	7
Aluminum Roof Coatings	8
Asphalt Emulsion Coatings	9
Basecoats and Primers	10-11
Patch and Repair: Roof Coatings, Fabrics and Tapes	12-13
Patch and Repair: Roof Sealants	14-15
Part Numbers	16-19

Benefits of UNIFLEX® Fluid Applied Roofing Systems

No Tear-Offs

- **No Disruption To Occupants.** With UNIFLEX, there is no need to close the building during installation. The non-toxic formulation means no disruption to occupants and no interruption of business.
- **Lightweight Solution.** Unlike traditional roof replacement, UNIFLEX Fluid Applied Roofing Systems provide a lightweight solution to roofing needs. It's ounces, not pounds, per square foot.

Extend the Life of Your Roof

- **Longer Building Life Cycle.** UNIFLEX Fluid Applied Roofing Systems are installed onto existing roofs to extend the service life of the facility.
- **Great Weatherability.** UNIFLEX Systems resist blistering, chalking, checking, cracking and flaking – protecting the roof from further weathering and degradation.

Sustainable Solutions

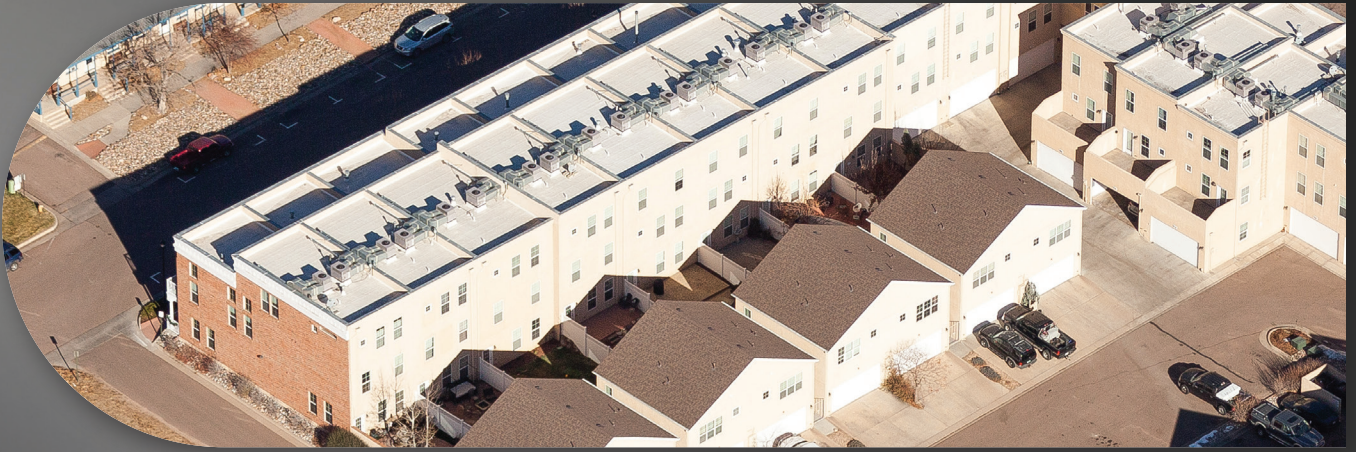
- **Lower Disposal Costs.** Coatings can be reapplied to continuously refresh the roof without tearing off existing roofing.
- **Environmentally Responsible.** The formulations of UNIFLEX Fluid Applied Roofing Systems do not require hot kettles or flames during installation. It's a safer process and the environmental benefits are significant.
- **Lower Roof Temperatures.** Highly reflective white coatings reflect 85% of the sun's radiant heat, dramatically lowering the temperature of the underlying roof and preventing further degradation.

Seamless Waterproofing

- **Proven Performance.** UNIFLEX Systems eliminate seams, the most common source of roof leaks. Our thick, flexible protective coatings provide lasting, easy-to-maintain waterproof protection.

Energy and Utility Savings

- **Significant Energy Savings.** According to EnergyStar.gov, having a white, reflective roof reduces the roof's surface temperature by up to 100 °F, significantly decreasing the amount of heat transferred into the building and reducing peak cooling demands. Higher reflectivity = lower energy consumption and lower cooling costs.
- **Cost-Saving Installation.** UNIFLEX Fluid Applied Roofing Systems are typically easier to install and maintain than a conventional tear-off roof and also eliminate unnecessary construction waste. This means such projects generally cost a fraction of the price of a new roof installation.
- **Utility Rebates.** Some utility companies offer rebates to building owners who conserve energy by using white reflective roof coatings. Contact your electric utility provider for energy rebate offers. Further details can be found at www.dsireusa.org.





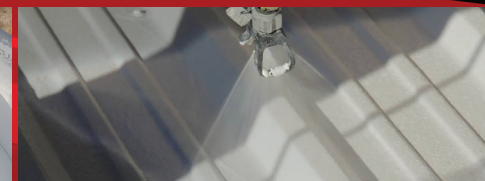
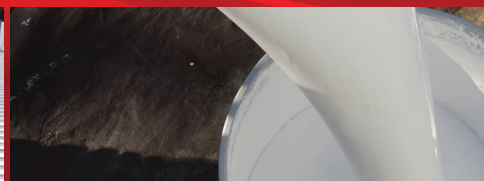
Reflective White Roof Coatings

Reflective Roof Coatings provide superior flexibility and durability. UNIFLEX® offers elastomeric roof coatings in highly reflective white, as well as custom shades in a variety of colors.



PRODUCT NAME	SILICONE44* WHITE ROOF COATING	SILICONE22 LOW-SOLID WHITE ROOF COATING	PREMIUM ELASTOMERIC WHITE	COMMERCIAL GRADE ELASTOMERIC WHITE
TECHNOLOGY	100% SILICONE	SILICONE	100% ACRYLIC ELASTOMERIC	100% ACRYLIC ELASTOMERIC
FEATURES AND BENEFITS	<ul style="list-style-type: none"> • High solids • Ponding water resistance • Outstanding adhesion • Excellent flow and leveling 	<ul style="list-style-type: none"> • Low solids • Ponding water resistance • Outstanding adhesion • Excellent flow and leveling 	<ul style="list-style-type: none"> • Premium grade • Outstanding adhesion • Superior reflectivity • Resists cracking and peeling • Excellent waterproofing capabilities • Reduces surface temperatures, minimizing thermal expansion and contraction 	<ul style="list-style-type: none"> • Commercial grade • Excellent adhesion and reflectivity • Great performance and value • Excellent waterproofing capabilities
RECOMMENDED SUBSTRATES	Over metal, polyurethane foam, cured concrete, smooth BUR, modified bitumen, granular cap sheets, EPDM, Hypalon® and other approved surfaces.	Over metal, polyurethane foam, cured concrete, smooth BUR, modified bitumen, granular cap sheets, EPDM, Hypalon and other approved surfaces.	Over metal, polyurethane foam, concrete, smooth BUR, modified bitumen, granular cap sheets, EPDM, Hypalon and other approved surfaces.	Over metal, polyurethane foam, concrete, smooth BUR, modified bitumen, granular cap sheets, EPDM, Hypalon and other approved surfaces.
USE WITH FABRIC/SEAM TAPE	✓	✓	✓	✓
PART NUMBER	KST044300 WHITE	KST044500 WHITE	KST041300 WHITE	KST041500 WHITE
SIZE	5-GALLON, 55-GALLON DRUM	5-GALLON	5-GALLON, 55-GALLON DRUM, 250-GALLON TOTE	5-GALLON 55-GALLON DRUM, 250-GALLON TOTE
VOC	< 50 g/L	≤ 246 g/L	≤ 50 g/L	< 50 g/L

APPROVALS





Pigmented Roof Coatings

UNIFLEX offers a variety of package colors and tintable bases.



COOLMAX41[®] HI-BUILD ELASTOMERIC ROOF COATING WHITE	PREMIUM ELASTOMERIC SEDONA TAN	PREMIUM ELASTOMERIC TINT BASES	PREMIUM ELASTOMERIC BLACK	SILICONE44[®] COLOR ROOF COATING
100% ACRYLIC ELASTOMERIC	100% ACRYLIC ELASTOMERIC	100% ACRYLIC ELASTOMERIC	100% ACRYLIC ELASTOMERIC	100% SILICONE
<ul style="list-style-type: none"> Formulated for desert climate conditions Easy application for high film build and superior hide Excellent flexibility to allow for expansion and contraction of the roof Dirt pickup resistant 	<ul style="list-style-type: none"> Premium grade Outstanding adhesion Resists cracking and peeling Excellent waterproofing capabilities 	<ul style="list-style-type: none"> Premium grade Excellent waterproofing capabilities Can be custom matched or shaded to the Sher-Color Palette Tinted with CCE colorant system 	<ul style="list-style-type: none"> Premium grade Outstanding adhesion Resists cracking and peeling Excellent waterproofing capabilities 	<ul style="list-style-type: none"> Ideal for ponding water Can be used as a basecoat or finish coat Superior adhesion to most roofing substrates Limited lifetime warranty <p><i>Other colors available. See Sales Rep for more information.</i></p>
Over metal, polyurethane foam, concrete, smooth BUR, modified bitumen, granular cap sheets, EPDM, Hypalon and other approved surfaces.	Over metal, polyurethane foam, concrete, smooth BUR, modified bitumen, granular cap sheets, EPDM, Hypalon and other approved surfaces.	Over metal, polyurethane foam, concrete, smooth BUR, modified bitumen, granular cap sheets, EPDM, Hypalon and other approved surfaces.	Over metal, polyurethane foam, concrete, smooth BUR, modified bitumen, granular cap sheets, EPDM, Hypalon and other approved surfaces.	Over metal, polyurethane foam, cured concrete, smooth BUR, modified bitumen, granular cap sheets, EPDM, Hypalon [®] and other approved surfaces.
✓	✓	✓	✓	✓
KST041505 WHITE	KST41300T SEDONA TAN	KST04130P PASTEL BASE KST04130D DEEP BASE KST04130A ACCENT BASE	KST041325 BLACK	KST044320 GRAY KST04432T TAN KST04432Y YELLOW
5-GALLON, 55-GALLON DRUM, 250-GALLON TOTE	5-GALLON	5-GALLON	5-GALLON, 55-GALLON DRUM	5-GALLON, 55-GALLON DRUM
< 50 g/L	≤ 50 g/L	< 50 g/L	< 50 g/L	< 50 g/L



Refer to the current MSDS/EDS for specific VOCs (calculated per 40 CFR 59.406).





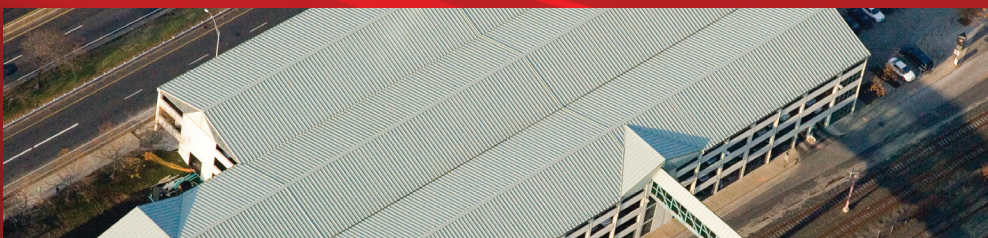


Aluminum Roof Coatings

Aluminum Finish Coats are proven to protect a roof surface from the elements. Provides a protective aluminum finish with waterproofing capabilities.



PRODUCT NAME	500 PREMIUM ALUMINUM	300 COMMERCIAL ALUMINUM	204XB NON-FIBERED ALUMINUM
TECHNOLOGY	ASPHALT	ASPHALT	ASPHALT
FEATURES AND BENEFITS	<ul style="list-style-type: none"> Brightest finish with enhanced aluminum Maximum coverage Fiber reinforced for lasting strength Resaturates to extend the life of asphalt and mod bit roofs Apply to slightly rusty metal roofs without a primer 	<ul style="list-style-type: none"> Bright aluminum finish Very good coverage Fiber reinforced, basic protection Refreshes asphalt surfaces Apply to slightly rusty metal roofs without a primer 	<ul style="list-style-type: none"> Non-fibered aluminum finish coat Good coverage Formulated from refined asphalt, aliphatic solvents, and ASTM D-962 aluminum paste Waterproof and adhesive properties of asphalt combined with the reflectivity of aluminum Reduces interior and exterior roof temperatures
RECOMMENDED SUBSTRATES	Over metal, smooth BUR, modified bitumen and other approved surfaces.	Over metal, smooth BUR, modified bitumen and other approved surfaces.	Over metal, smooth BUR, modified bitumen and other approved surfaces.
CAN BE USED WITH FABRIC	✓	✓	✓
PART NUMBER	KST020475 SILVER	KST020480 SILVER	KST0204XB SILVER
SIZE	5-GALLON, 55-GALLON DRUM	5-GALLON, 55-GALLON DRUM	5-GALLON
VOC	435 ± 10 g/L	450 ± 10 g/L	<400 g/L
APPROVALS	 		





Asphalt Emulsion Coatings

Asphalt Emulsion Coatings are manufactured through a unique process that allows asphalt to mix with water. This easy-to-apply coating can be used in a variety of applications.



PRODUCT NAME	FIBERED ASPHALT EMULSION	NON-FIBERED ASPHALT EMULSION
TECHNOLOGY	ASPHALT	ASPHALT
FEATURES AND BENEFITS	<ul style="list-style-type: none"> Reinforced with poly-fibers for extra strength and durable, easy-to-apply coating Outstanding abrasion resistance Exceptional weathering characteristics to prevent alligating and hardening Meets ASTM D1227, Type II, Class 1 	<ul style="list-style-type: none"> Non-fibered for improved penetration and resaturating, easy-to-apply coating Outstanding abrasion resistance Exceptional weathering characteristics to prevent alligating and hardening Meets ASTM D1227, Type II, Class 1
RECOMMENDED SUBSTRATES	Recommended for resurfacing extremely dried-out or heavily alligatored surfaces on smooth, built-up and modified bitumen roofs. Surface can then be coated with UNIFLEX® Elastomeric or Aluminum Coating systems.	Recommended for resurfacing extremely dried-out or heavily alligatored surfaces on smooth, built-up and modified bitumen roofs. Surface can then be coated with UNIFLEX Elastomeric or Aluminum Coating systems.
USE WITH FABRIC	✓	✓
PART NUMBER	KST040312 BLACK	KST040314 BLACK
SIZE	5-GALLON, 55-GALLON DRUM	5-GALLON, 55-GALLON DRUM
VOC	< 0 g/L	0 g/L
APPROVALS		

Refer to the current MSDS/EDS for specific VOCs (calculated per 40 CFR 59.406).





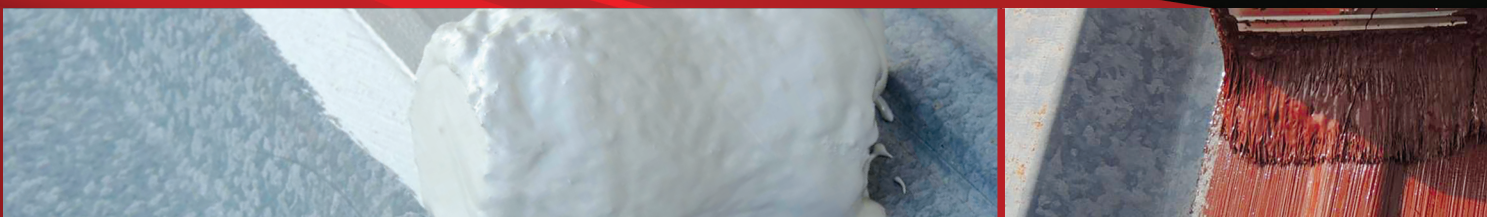
Basecoats and Primers

Proper surface preparation is key to a successful coating job. UNIFLEX® offers a full line of basecoats and primers.



PRODUCT NAME	PREMIUM ELASTOMERIC GRAY	COMMERCIAL GRADE ELASTOMERIC GRAY	SINGLE PLY ELASTOMERIC ACRYLIC GRAY BASECOAT	ELASTOMERIC MB BASECOAT	RUST INHIBITIVE METAL PRIMER
TECHNOLOGY	100% ACRYLIC ELASTOMERIC	100% ACRYLIC ELASTOMERIC	ACRYLIC	100% ACRYLIC ELASTOMERIC	ALKYD
FEATURES AND BENEFITS	<ul style="list-style-type: none"> Premium grade Outstanding adhesion Resists cracking and peeling Excellent waterproofing capabilities Can be used as a basecoat or finish coat 	<ul style="list-style-type: none"> Commercial grade Excellent adhesion Great performance and value Can be used as a basecoat or finish coat 	<ul style="list-style-type: none"> Cross-linking acrylic polymer for enhanced adhesion Must be topcoated by UNIFLEX Elastomeric Finish Coat 	<ul style="list-style-type: none"> Outstanding adhesion Resists cracking and peeling Excellent waterproofing capabilities Must be topcoated by UNIFLEX Elastomeric Finish Coat 	<ul style="list-style-type: none"> Superior corrosion resistance Meets Federal Specification TT-P-636D
RECOMMENDED SUBSTRATES	As a basecoat, can be used over metal, concrete and polyurethane foam. Refer to Product Data Sheet for additional recommended substrates if used as a finish coat.	As a basecoat, can be used over metal, concrete and polyurethane foam. Refer to Product Data Sheet for additional recommended substrates if used as a finish coat.	Over weathered EPDM, Hypalon® TPO and other approved single-ply membranes.	Over smooth BUR, modified bitumen, granular cap sheets and other approved surfaces.	All types of metal surfaces, including iron and steel, where corrosion is a problem.
USE WITH FABRIC/SEAM TAPE	✓	✓	✓	✓	✓
PART NUMBER	KST041320 GRAY	KST041520 GRAY	KST041321 GRAY	KST041510 WHITE KST041512 GRAY	KST034520 RED
SIZE	5-GALLON, 55-GALLON DRUM, 250-GALLON TOTE	5-GALLON, 55-GALLON DRUM	5-GALLON, 55-GALLON DRUM	5-GALLON, 55-GALLON DRUM, 250-GALLON TOTE (WHITE)	5-GALLON, 55-GALLON DRUM
VOC	< 50 g/L	< 50 g/L	≤ 50 g/L	< 50 g/L	≤ 400 g/L

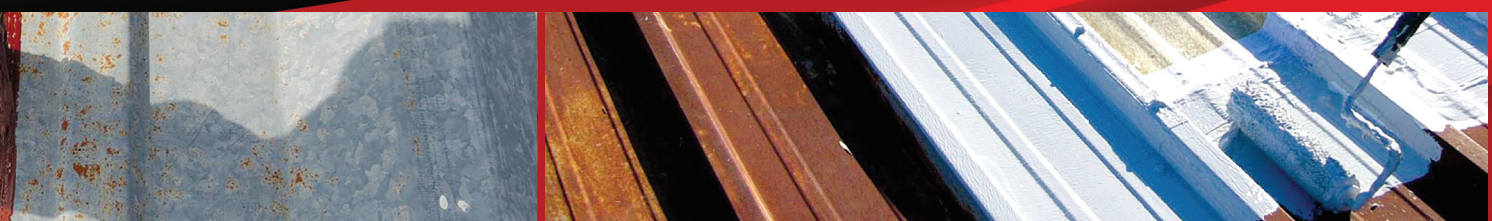
APPROVALS



Refer to the current MSDS/EDS for specific VOCs
(calculated per 40 CFR 59.406).



ACRYLIC RUST INHIBITIVE METAL PRIMER	BLACK ASPHALT PRIMER	ACRYLIC CONCRETE PRIMER	BOND-IT WASH	BLEED BLOCKER PRIMER
ACRYLIC	ASPHALT	ACRYLIC	100% WATER BASED	WATERBORNE MODIFIED ACRYLIC
<ul style="list-style-type: none"> Corrosion-resistant primer for metal roof surfaces Good adhesion to difficult surfaces, including pre-finished metal roofing containing fluorocarbon 	<ul style="list-style-type: none"> Restores oils and rejuvenates dried-out asphalt surfaces, such as smooth surface buildup and modified bitumen roofs prior to coating with UNIFLEX Aluminum Coatings 	<ul style="list-style-type: none"> High-performance primer Highly alkali and efflorescence resistant Can be applied to surfaces with a pH of 6 to 13 	<ul style="list-style-type: none"> Acts as a cleaning primer for EPDM membranes by breaking the chemical bond of the inorganics on the surface of the rubber membrane, preparing the surface for the UNIFLEX Elastomeric Coating system 	<ul style="list-style-type: none"> High-performance waterborne epoxy designed to prevent asphalt bleed through when applied over asphaltic substrates prior to application of UNIFLEX Silicone Coatings improving long-term performance and durability
All types of metal surfaces, including iron and steel, where corrosion is a problem. Over pre-finished metal surfaces including fluorocarbon (Kynar®).	Over smooth BUR and modified bitumen.	Seals and adheres to concrete.	Over single ply.	Over smooth SBS modified bitumen, granular cap sheets and other approved surfaces.
✓	✓	✓		
KST036520 WHITE	KST020412 BLACK	KST036500 WHITE	KST038620 CLEAR	KST041530 BLUE
5-GALLON, 55-GALLON DRUM	55-GALLON DRUM	5-GALLON	5-GALLON	5-GALLON, 55-GALLON DRUM
< 50 g/L	< 350 g/L	96 g/L	0 g/L	< 63 g/L
				





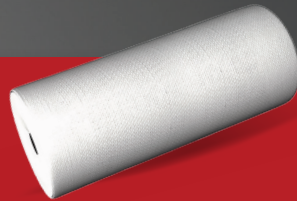
Patch and Repair: Roof Coatings, Fabrics and Tapes

Stop leaks and roof deterioration with our patch and repair products.



PRODUCT NAME	ACRYLIC PATCHING CEMENT	SLOPE BUILDER	SKYLIGHT RESTORATIVE CLEAR COATING
TECHNOLOGY	ACRYLIC BASED ELASTOMERIC RESIN	100% ACRYLIC ELASTOMERIC	100% ACRYLIC
FEATURES AND BENEFITS	<ul style="list-style-type: none"> Provides a long-lasting, durable, resilient patch UV and water resistant with excellent resistance to mildew attack and weathering 	<ul style="list-style-type: none"> Designed to build up low-lying areas on flat, low-sloped roofs Provides protective waterproofing solutions 	<ul style="list-style-type: none"> Protective coating over fiberglass skylight panels restoring the panel to its original condition Provides a durable, weather-resistant finish while increasing the panel's light translucent value
RECOMMENDED SUBSTRATES	Repairs metal roof seams, penetration and wall flashings, small holes, splits, cracks, blisters in built-up, modified bitumen, polyurethane foam and concrete.	To create roof crickets around HVAC and around rooftop equipment. It is ideal for building up low-lying areas near drains, in valleys, along parapet walls and in the field of the roof prior to installing UNIFLEX Fluid Applied Roofing Systems.	Over fiberglass skylight panels.
USE WITH FABRIC/SEAM TAPE	✓	✓	✓
PART NUMBER	KST041220 WHITE	KST0SLPBD GRAY	KST019100 CLEAR
SIZE	2-GALLON 5-GALLON	40 LBS. POWDER IN 5-GALLON	5-GALLON
VOC	< 50 g/L	0 g/L	< 50 g/L





WET-DRY ROOF CEMENT

POLYESTER FABRIC

BUTYL SEAM TAPE

ASPHALT

POLYESTER

BUTYL RUBBER

- Single-component, asbestos-free, asphalt-based cement designed for roofing applications
- Seals quickly, will not pull apart or lose its bond, remains soft and pliable, and resists temperature change
- Can be applied to wet or dry surfaces, even underwater

- Exceptionally strong material
- Accommodates expansion and contraction
- Use for reinforcement for all general roof repairs, seams, flashings, penetration areas and other roof detail areas

- Self-adhering butyl rubber waterproofing tape
- Maintains its flexibility necessary to respond to dynamics of roof movement
- Seals seams, flashings, penetration areas and other roof detail areas

Adheres to asphaltic-based roofing substrates.

Use in three-course methods with embedded fabrics with elastomeric or emulsion coatings.

Seals seams, flashings, penetration areas and other roof detail areas.



KST058600 BLACK

KST203850 WHITE
KST20385A WHITE
KST20385B WHITE
KST020385 WHITE

KST020802
KST020804
KST020806
KST020808

10 OZ. CARTRIDGE,
1-GALLON, 5-GALLON

4" x 324', 6" x 324', 12" x 324', 40" x 324'

2" x 50', 4" x 50', 6" x 50',
8" x 50'

< 260 g/L

N/A

N/A



Refer to the current MSDS/EDS for specific VOCs (calculated per 40 CFR 59.406).



Patch and Repair: Roof Sealants

Stop leaks and roof deterioration with our patch and repair products.



PRODUCT NAME	ONE FLASH™ ROOF REPAIR SEALANT	SILICONE 44-900 SILICONE RUBBERIZED ROOF AND FLASHING SEALANT	TRIPOLYMER ROOFING SEALANT
TECHNOLOGY	MS HYBRID	100% SILICONE	SOLVENT
FEATURES AND BENEFITS	<ul style="list-style-type: none"> • Single-step application for reduced labor time • No fabric reinforcement required* • Easy application by brush or caulking gun • Remains flexible and strong • Excellent adhesion to multiple substrates • Can be recoated by traditional acrylic and silicone roof coatings <p>*No fabric or tape needed for gaps less than 1/8".</p>	<ul style="list-style-type: none"> • Durable, weather-resistant seal • Excellent adhesion • Permanently flexible • Can only be coated with silicone 	<ul style="list-style-type: none"> • Primerless application • Excellent adhesion to many building surfaces, even when damp • Exceptional elongation and flexibility
RECOMMENDED SUBSTRATES	EPDM, aged TPO, aged PVC, metal, concrete, modified bitumen, asphalt, most silicones and other common roof substrates.	Adheres to EPDM, primed TPO, metal, concrete, mod bit, Hypalon®, asphalt shingles and other common roof substrates.	Adheres to coated metal (Kynar®) brick, concrete, glass, vinyl, steel, tile, wood, asphalt and other common roof substrates.
TACK FREE/ CURE TIME	Skin Time 30-60 Minutes/ Full Cure 24 Hours	30 Minutes 24 Hours	2 Hours 4 to 6 Days
APPLICATION TEMP/ SERVICE TEMP	30 °F to 140 °F/ -40 °F to 200 °F	35 °F to 160 °F	0 °F to 140 °F -40 °F to 180 °F
PART NUMBER	KST051920 GRAY KST051921 WHITE	KST044900 WHITE	KST058450 CLEAR
FILL LEVEL	20 OZ. SAUSAGE, 2-GALLON, 5-GALLON	10 OZ. CARTRIDGE, 2-GALLON	10.3 OZ. CARTRIDGE
VOC	< 1% wt	< 3% wt	3.84% wt





MS HYBRID ROOFING SEALANT	SOLVENT-BASED BRUSHABLE ROOF REPAIR SEALANT
MS HYBRID	SOLVENT
<ul style="list-style-type: none"> • Applies, adheres and cures underwater • Two-products-in-one lap adhesive and scrim edge sealant • Remains flexible and will not shrink during curing 	<ul style="list-style-type: none"> • Single-component, elastic sealant • Withstands water contact immediately after application • Fibered for strength, will function in severe UV, heat, acid rain and intermittent foot traffic • One-step application with no primer required • Applies in extreme temperature ranges, including wet and icy conditions
Adheres to coated metal (Kynar) EPDM, primed TPO, primed PVC, metal and other common roof substrates. Primed with UNIFLEX® TPO & PVC Adhesion Promoter.	Adheres to many roofing materials, including damp, oily or slightly dirty surfaces. Not for use on EPDM.
40 Minutes/4 Days 75 Minutes/1 Day (Clear Only)	4 Hours 5 Days
30 °F to 120 °F -40 °F to 200 °F	-40 °F to 250 °F -40 °F to 250 °F
KST058310 BLACK KST058350 CLEAR	KST058500 WHITE KST058550 CLEAR
10.1 OZ. CARTRIDGE (WHITE, BLACK ONLY) 9.5 OZ. CARTRIDGE (CLEAR ONLY)	1-GALLON
< 1% wt	< 550 g/L

Refer to the current MSDS/EDS for specific VOCs (calculated per 40 CFR 59.406).





Part Numbers

SKU Listings

REFLECTIVE WHITE ROOF COATINGS

PRODUCT NUMBER	PRODUCT DESCRIPTION	SIZE DESCRIPTION	SIZE CODE	SMIS CODE
KST041300	Premium Elastomeric White Finish Coat	5-Gallon	20	009921156
KST041300	Premium Elastomeric White Finish Coat	55-Gallon Drum	27	009921164
KST041300	Premium Elastomeric White Finish Coat	250-Gallon Tote	28	001556604
KST041500	Commercial Grade Elastomeric White Finish Coat	5-Gallon	20	009921248
KST041500	Commercial Grade Elastomeric White Finish Coat	55-Gallon Drum	27	009921255
KST041500	Commercial Grade Elastomeric White Finish Coat	250-Gallon Tote	28	001512920
KST041505	CoolMax41® Hi-Build Elastomeric White Finish Coat	5-Gallon	20	651030165
KST041505	CoolMax41 Hi-Build Elastomeric White Finish Coat	55-Gallon Drum	27	651030298
KST041505	CoolMax41 Hi-Build Elastomeric White Finish Coat	250-Gallon Tote	28	651063224
KST044300	Silicone44® Silicone Rubberized White Roof Coating	5-Gallon	20	650963036
KST044300	Silicone44 Silicone Rubberized White Roof Coating	55-Gallon Drum	27	650963051
KST044320	Silicone44 Silicone Rubberized Gray Roof Coating	5-Gallon	20	650963069
KST044320	Silicone44 Silicone Rubberized Gray Roof Coating	55-Gallon Drum	27	650963077
KST044500	Silicone22 Low Solid Silicone Rubberized White Roof Coating	5-Gallon	20	102044062

PIGMENTED ROOF COATINGS

PRODUCT NUMBER	PRODUCT DESCRIPTION	SIZE DESCRIPTION	SIZE CODE	SMIS CODE
KST04130A	Premium Elastomeric Tint Bases – Accent Finish Coat	5-Gallon	20	650118029
KST04130D	Premium Elastomeric Tint Bases – Deep Finish Coat	5-Gallon	20	650118011
KST04130P	Premium Elastomeric Tint Bases – Pastel Finish Coat	5-Gallon	20	650118003
KST041325	Premium Elastomeric Black Finish Coat	5-Gallon	20	1556638
KST41300T	Premium Elastomeric Sedona Tan Finish Coat	5-Gallon	20	650340490
KST044320	Silicone44 Silicone Rubberized Roof Coating – Gray	5-Gallon	20	650963069
KST044320	Silicone44 Silicone Rubberized Roof Coating – Gray	55-Gallon Drum	27	650963077
KST04432T	Silicone44 Silicone Rubberized Roof Coating – Tan	5-Gallon	20	651339871
KST04432T	Silicone44 Silicone Rubberized Roof Coating – Tan	55-Gallon Drum	27	651339988
KST04432Y	Silicone44 Silicone Rubberized Roof Coating – Yellow	5-Gallon	20	651340002
KST04432Y	Silicone44 Silicone Rubberized Roof Coating – Yellow	55-Gallon Drum	27	651340036

Other colors available. See Sales Rep for more information.

ALUMINUM ROOF COATINGS

PRODUCT NUMBER	PRODUCT DESCRIPTION	SIZE DESCRIPTION	SIZE CODE	SMIS CODE
KST020475	500 Premium Aluminum Silver Finish Coat	5-Gallon	20	9921032
KST020475	500 Premium Aluminum Silver Finish Coat	55-Gallon Drum	27	9921040
KST020480	300 Commercial Aluminum Silver Finish Coat	5-Gallon	20	9921057
KST020480	300 Commercial Aluminum Silver Finish Coat	55-Gallon Drum	27	8942385
KST0204XB	204XB Non-Fibered Aluminum Silver Finish Coat	5-Gallon	20	651080798

ASPHALT EMULSION COATINGS

PRODUCT NUMBER	PRODUCT DESCRIPTION	SIZE DESCRIPTION	SIZE CODE	SMIS CODE
KST040312	Fibered Asphalt Emulsion	5-Gallon	20	1512912
KST040312	Fibered Asphalt Emulsion	55-Gallon Drum	27	1556570
KST040314	Non-Fibered Asphalt Emulsion	5-Gallon	20	9921123
KST040314	Non-Fibered Asphalt Emulsion	55-Gallon Drum	27	9921131

BASECOATS AND PRIMERS

PRODUCT NUMBER	PRODUCT DESCRIPTION	SIZE DESCRIPTION	SIZE CODE	SMIS CODE
KST020412	Black Asphalt Primer	55-Gallon Drum	27	9921016
KST034520	Rust Inhibitive Metal Primer – Red	5-Gallon	20	9921107
KST034520	Rust Inhibitive Metal Primer – Red	55-Gallon Drum	27	1556562
KST036520	Acrylic Rust Inhibitive Primer – White	5-Gallon	20	650174808
KST036520	Acrylic Rust Inhibitive Primer – White	55-Gallon Drum	27	650389992
KST036500	Acrylic Concrete Primer	5-Gallon	20	650467731
KST038620	Bond-It Wash Primer	5-Gallon	20	9921115
KST041320	Premium Elastomeric Gray Basecoat	5-Gallon	20	9921206
KST041320	Premium Elastomeric Gray Basecoat	55-Gallon Drum	27	9921214
KST041320	Premium Elastomeric Gray Basecoat	250-Gallon Tote	28	1556620
KST041321	Single Ply Elastomeric Acrylic Gray Basecoat	5-Gallon	20	9921222
KST041321	Single Ply Elastomeric Acrylic Gray Basecoat	55-Gallon Drum	27	9921230
KST041510	Elastomeric MB White Basecoat	5-Gallon	20	9921263
KST041510	Elastomeric MB White Basecoat	55-Gallon Drum	27	9921271
KST041510	Elastomeric MB White Basecoat	250-Gallon Tote	28	1556646
KST041512	Elastomeric MB Gray Basecoat	5-Gallon	20	650367840
KST041512	Elastomeric MB Gray Basecoat	55-Gallon Drum	27	650367899
KST041520	Commercial Grade Elastomeric Gray Basecoat	5-Gallon	20	9921289
KST041520	Commercial Grade Elastomeric Gray Basecoat	55-Gallon Drum	27	9921297
KST041530	Bleed Blocker Primer	5-Gallon	20	651339814
KST041530	Bleed Blocker Primer	55-Gallon Drum	27	651339830

PATCH AND REPAIR: ROOF COATINGS, FABRICS AND TAPES

PRODUCT NUMBER	PRODUCT DESCRIPTION	SIZE DESCRIPTION	SIZE CODE	SMIS CODE
KST019100	Skylight Restorative Clear Coating	5-Gallon	20	9920984
KST041220	Acrylic White Patching Cement	5-Gallon	20	9921149
KST0SLPBD	Slope Builder	5-Gallon	51	650391311



Part Numbers

SKU Listings

PATCH AND REPAIR: ROOF COATINGS, FABRICS AND TAPES (CONTINUED)

PRODUCT NUMBER	PRODUCT DESCRIPTION	SIZE DESCRIPTION	SIZE CODE	SMIS CODE
KST020802	Seam Tape 2" x 50'	2" x 50'	99	009921073
KST020804	Seam Tape 4" X 50'	4" x 50'	99	009921081
KST020806	Seam Tape 6" X 50'	6" x 50'	99	009921099
KST020808	Seam Tape 8" X 50'	8" x 50'	99	001556554
KST020385	Polyester Fabric 40" X 324'	40" x 324'	99	009920992
KST058600	Wet-Dry Roof Cement	10 oz.	01	650441769
KST058600	Wet-Dry Roof Cement	128 oz.	16	650442643
KST058600	Wet-Dry Roof Cement	5-Gallon	20	650442684
KST203850	Polyester Fabric 4" X 324'	4" x 324'	99	650830391
KST20385A	Polyester Fabric 6" X 324'	6" x 324'	99	009921339
KST20385B	Polyester Fabric 12" X 324'	12" x 324'	99	650201742

PATCH & REPAIR: ROOFING SEALANTS

PRODUCT NUMBER	PRODUCT DESCRIPTION	SIZE DESCRIPTION	SIZE CODE	SMIS CODE
KST044900	Silicone44®-900 Silicone Rubberized Roof and Flashing Sealant – White	10 oz. Cart	01	650971245
KST044900	Silicone44-900 Silicone Rubberized Roof and Flashing Sealant – White	2-Gallon	17	650971252
KST051920	One Flash™ Roof Repair Sealant – Gray	2-Gallon	17	651038820
KST051920	One Flash Roof Repair Sealant – Gray	5-Gallon	20	651038846
KST051920	One Flash Roof Repair Sealant – Gray	20 oz. Sausage	43	651047557
KST051921	One Flash Roof Repair Sealant – White	2-Gallon	17	651208043
KST051921	One Flash Roof Repair Sealant – White	5-Gallon	20	651208068
KST051921	One Flash Roof Repair Sealant – White	20 oz. Sausage	43	651208076
KST058310	MS Hybrid Roofing Sealant – Black	10.1 oz.	01	650433097
KST058350	MS Hybrid Roofing Sealant – Clear	9.5 oz.	01	650433105
KST058450	Tripolymer Roofing Sealant – Clear	10.3 oz.	01	650433121
KST058500	Solvent-based Brushable Roof Repair Sealant – White	128 oz.	16	650433261
KST058550	Solvent-based Brushable Roof Repair Sealant – Clear	128 oz.	16	650433253